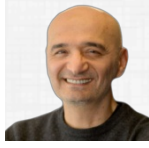


H
T



YAZARLAR





A light gray rounded rectangular form. In the top-left corner, there is a red circle containing a white minus sign. Below this, there is a white rounded rectangular input field. The form is separated from the content below by a horizontal dotted line.A light gray rounded rectangular form. At the bottom right of the form, there is a red rounded rectangular button. The form is separated from the content below by a horizontal dotted line.A light gray rounded rectangular form.A light gray rounded rectangular form with a small red dot located near the bottom right corner.A light gray rounded rectangular form with a small red dot located near the bottom right corner.

