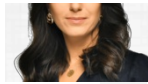


H  
T



## YAZARLAR



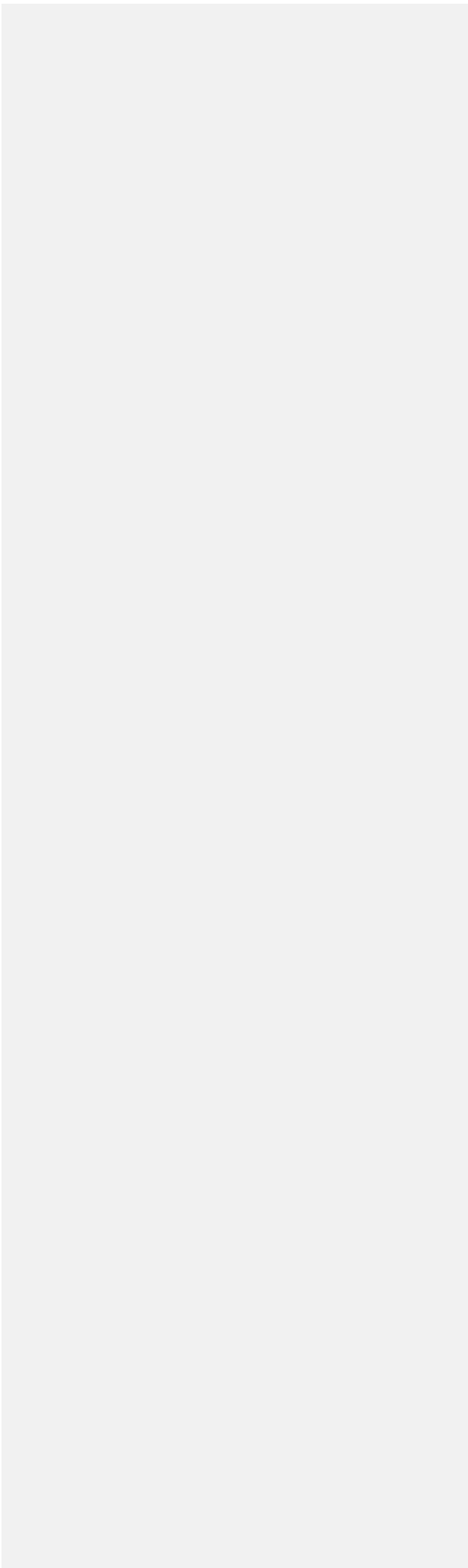










A light gray rectangular form with rounded corners. In the top-left corner, there is a red circular button containing a white minus sign. Below this button is a white rounded rectangular input field. The rest of the form is a light gray area, separated from the top by a dashed white line and from the bottom by a dotted white line.A light gray rectangular form with rounded corners. At the bottom right corner, there is a prominent red rounded rectangular button. The rest of the form is a light gray area, separated from the top by a dashed white line and from the bottom by a dotted white line.Three stacked, light gray rectangular bars with rounded corners, separated by thin horizontal lines. The top bar is the largest, and the two bars below it are smaller and of equal size.

